

**5TH BULACAN
SHINE
CONFERENCE**

SCHOOL HYDROLOGICAL INFORMATION NETWORK

Ramona S. Trillana High School

Objective...

Aims to raise school children awareness on CLIMATE CHANGE through monitoring rainfall and tracking typhoon.

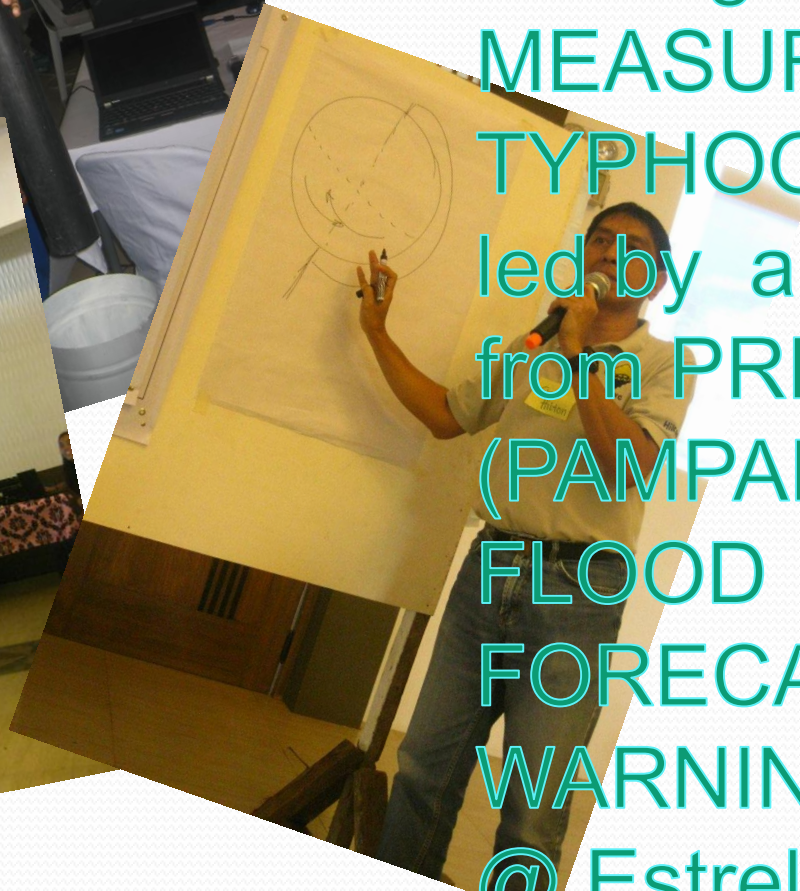
**SEMINARS
AND
TRAININGS
ATTENDED 😊**

HWCS and RSTHS SHINe Orientation ☺



SHINE RAMONA @ ESTRELLA





SHINe RAMONA
attended a one – day
training on RAINFALL
MEASURING and
TYPHOON TRACKING
led by a representative
from PRFFWC
(PAMPANGA RIVER
FLOOD
FORECASTING and
WARNING CENTER)
@ Estrella Events

4TH BULACAN SHINE CONFERENCE @ MALOLOS CLUB ROYALE

PROGRAMME

7:30AM **REGISTRATION**
Provincial Disaster Risk Reduction and Management Office

RAUL D. AGUSTIN
EMEN B. JAMAGAN
Mayor and Governor
of Bulacan

8:00AM **OPENING PROGRAM**

Message
Dr. ROMEO M. ALIP, CEISO IV, Schools Division Superintendent - Bulacan
Message
M. LOURDES L. PAMBID, Save the Children Inc.
Message
DR. JOSE M. DELA CRUZ, DRRMC Chairman

1:00PM **TRAINING**
Presentation on basic fire safety thru our Bulacan Rescue-BFP personnel

4:30PM **CLOSING PROGRAM**
Presentation of Winners of Two Computers
Closing Remarks
DR. JOSE M. DELA CRUZ, DRRMO and PRFFWC
DR. FELICISIMA L. MUNGCAL, PDRRM Officer

DEPED
DEPARTMENT OF EDUCATION



Save the
Children


2011.3.21



Jaylou S. Vargas
SHINe President

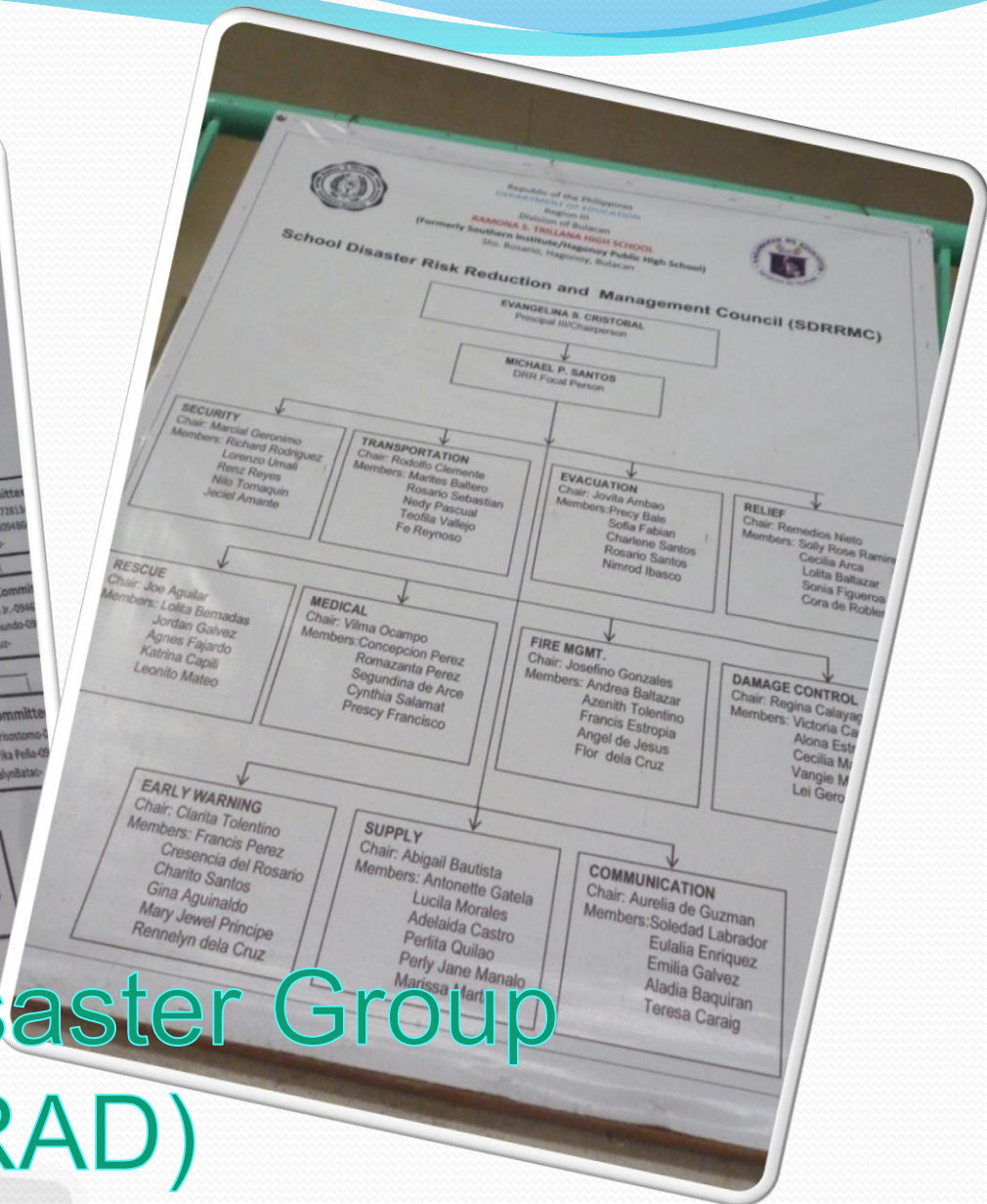
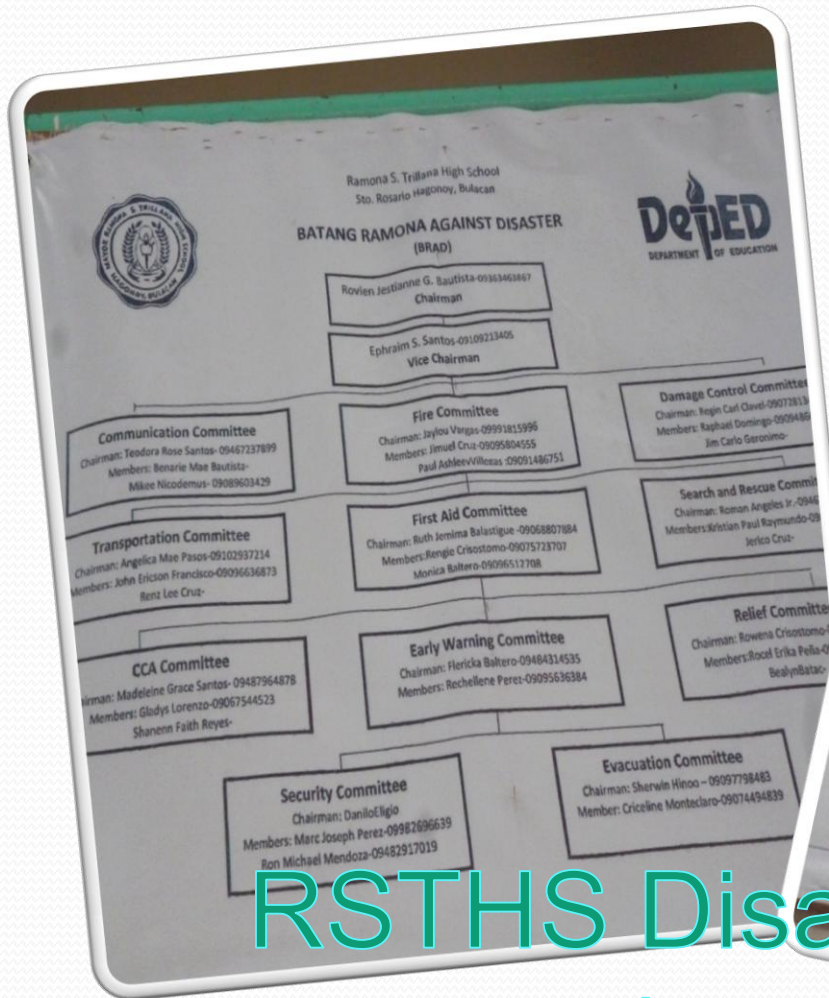


Mr. Michael P. Santos
BRAD/ SHINe Adviser



PROJECTS AND ACTIVITIES


The following activities
were done with the
partnership of SHINe
Ramona and BRAD
(Batang Ramona
Against Disaster)...



RSTHS Disaster Group (BRAD)



- Early Warning System
 - Fire Ladder
 - Fire Bucket
- Improved Life Vest



DATA GATHERING

Monthly Data Sheet Rainfall in mm (Meteorological day)

Station: _____ LAT. _____

Year: 2013 LONG _____

Month: November NOTE: Blanks means "No Observations made"

Day	0:00	1:00	2:00	3:00	4:00	5:00	6:00	7:00	8:00	9:00	10:00	11:00	12:00	13:00	14:00	15:00	16:00	17:00	18:00	19:00	20:00	21:00	22:00	23:00
1																								
2																								
3																								
4																								
5																								
6																								
7																								
8																								
9																								
10																								
11																								
12																								
13																								
14																								
15																								
16																								
17																								
18																								
19																								
20																								
21																								
22																								
23																								
24																								
25																								
26																								
27																								
28																								
29																								
30																								
31																								



Month of November

Monthly Data Sheet

Rainfall in mm (Meteorological day)

10-2007

Station: _____

LAT. _____

Year: _____

LONG _____

Month: _____

NOTE: Blanks means "NO Observations made"

Day	0:00	1:00	2:00	3:00	4:00	5:00	6:00	7:00	8:00	9:00	10:00	11:00	12:00	13:00	14:00	15:00	16:00	17:00	18:00	19:00	20:00	21:00	22:00	23:00	
1																									
2																									
3																									
4																									
5																									
6																									
7																									
8																									
9																									
10																									
11																									
12																									
13																									
14																									
15																									
16																									
17																									
18																									
19																									
20																									
21																									
22																									
23																									
24																									
25																									
26																									
27																									
28																									
29																									
30																									

Remarks: _____

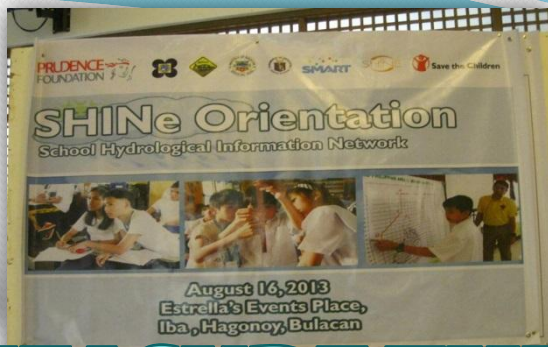


DISASTER



FIRE





**WE MEASURE THE RAIN,
WE COOPERATE IN THE
CAMPAIGN,
AND WITH THE
INFORMATION WE SHARE,
WE HELP OUR COMMUNITY,
PREPARE.**

