

BINAGBAG NATIONAL HIGH SCHOOL

SHINE PRESENTATION



An Overview of the School

Binagbag National High School vows to prepare the students to become competent, independent, productive and useful members of community, God fearing and patriotic. The school readies the students on challenges offered in the 21st century society. Values formation is the paramount concern of the school thus equipping graduates of the skills needed locally and internationally is given the highest priority.

Undoubtedly the school is indebted to the proponents who endeavored hard for its establishments only to provide excellent scholastic service to the community and its neighboring towns.

One of its remarkable achievements is the consistent number of enrollees for the last five years where the freshmen got the biggest chunk. Parents preferred to send their children here because of its proximity, the unparalleled performance of its mentors and the unblemished reputation of this institutions are the things to reckon with.

An Overview of the School

The 25 strong teaching personnel who are highly trained and the non-teaching staff proved to be equally functional on their designated tasks.

The administrators, relentless on their drive, continue to evaluate physical facilities to provide the students more sophisticated equipment necessary for their academic growth.

Right now, the school has the Internet, TV, VCD, DVD and Overhead projectors for the effective instructional delivery on all learning areas.

The Corporate Culture

ENVIRONMENT

Situated almost at the foot of Sierra Madre Mountain. It is proximate to Angat town proper. The school has the total land area of 7,397 sq.m. Commercial establishment, gas stations, quasi parish and residential are also close to the school. Its surrounding is agricultural (east and west part) .

PHYSICAL FEATURES

- * 16 Academic class
- * 1 Science Laboratory
- * 1 Computer Lab. with 30 P.C.
- * Renovated Faculty Room with C.R.
- * Principal's Office
- * Guidance Office / NDEP Center
- * Social Hall
- * Functional Bells
- * Library Center
- * Multi-Purpose Covered Court
- * 4 Classrooms-2 Storey Building
- * 2 Comfort Rooms
- * English Garden
- * Math Garden
- * Science Garden
- * Recreational Area
- * Guard House

ACCESSIBILITY

From: Angat-2 kms
San Rafael-4 kms

District Office- 2 kms
Norzagaray- 6 kms



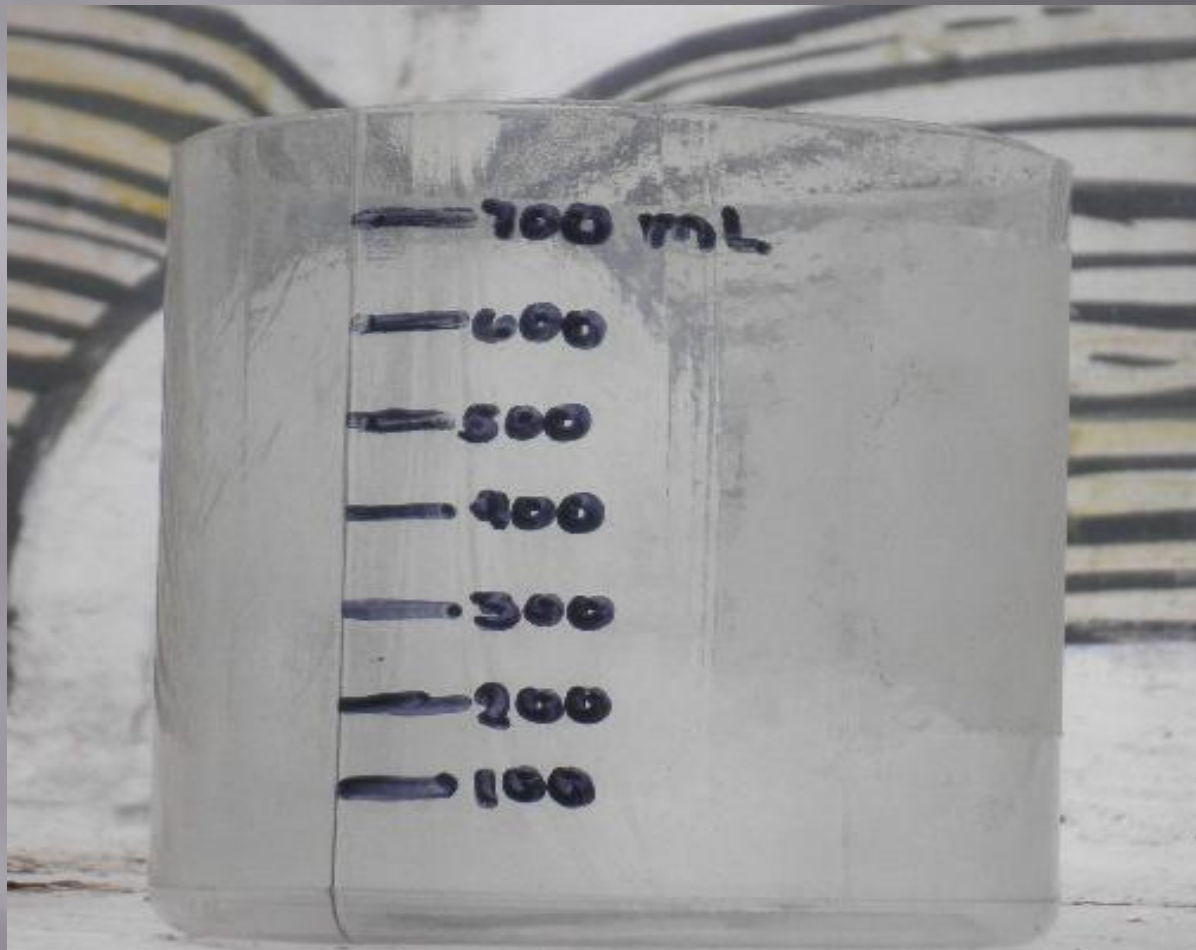
Rain Gauge



LCD Monitor



Information Board



Improvised Prototype Rain Gauge

Rainfall Data

MONTH	Time (0800)	Time(1600)
June		
16	001	001
17	001	000
20	NO CLASSES	NO CLASSES
21	980	002
22	049	001
23	048	HALF DAY
24	NO CLASSES	NO CLASSES
27	684	048
28	001	033
29	003	001
30	003	001

MONTH	Time(0800)	Time(1600)
July		
1	001	
4	039	001
5	024	004
6	029	005
7	009	
8	021	
11	147	029
12		
13	006	005
14	003	001
15	042	002
18	005	002
19	011	001

MONTH	Time (0800)	Time(1600)
August		
9	007	000
10	004	003
11	001	001
12	009	000
15	070	003
16	011	003
17		
18		
19		
22	021	003
23	000	001
24	007	000
25	008	004
26	003	023
29-30	NO CLASSES	NO CLASSES
31	383	023

MONTH	Time (0800)	Time(1600)
September		
1	048	018
2	009	007
5	113	000
6	009	000
7	000	001
8	000	001
9	017	087
12	000	001

September		
13	001	000
14	001	003
15	000	001
16	001	002
19	145	002
20	032	012
21	003	000
22	001	000
23	124	000
26	039	129
27	NO CLASSES	NO CLASSES
28	NO CLASSES	NO CLASSES
29	009	013
30		

ENCOUNTERED PROBLEMS

1. Observation of data during inclement weather.
2. Members
3. Clogging of rain gauge

Recommendations

1. Cross-Visit
2. Seminars with in the School
3. Tree planting

Photos of Members

